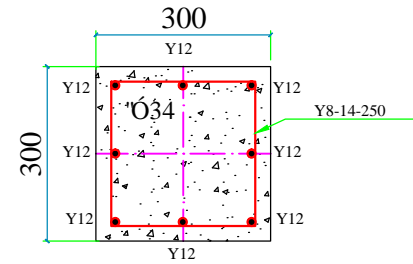
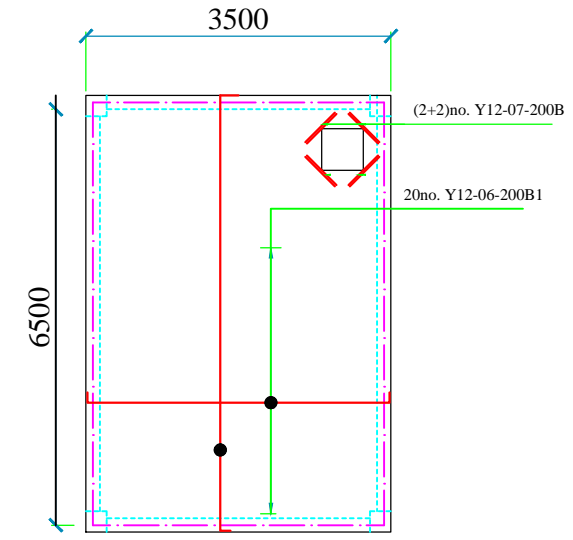


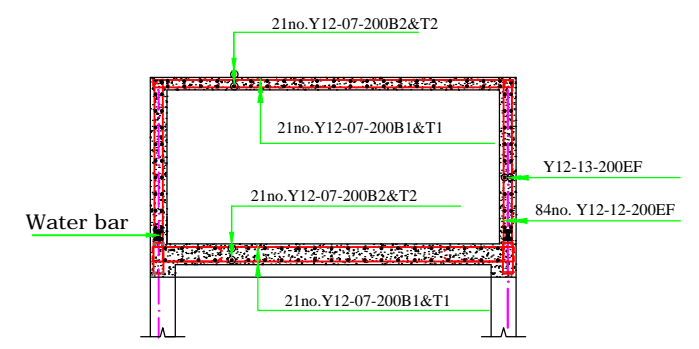
Foundation - Layout



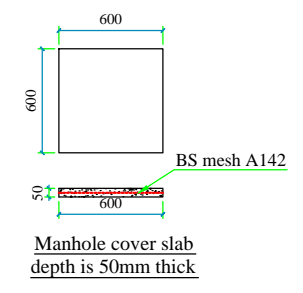
Sect' 02 - 02.



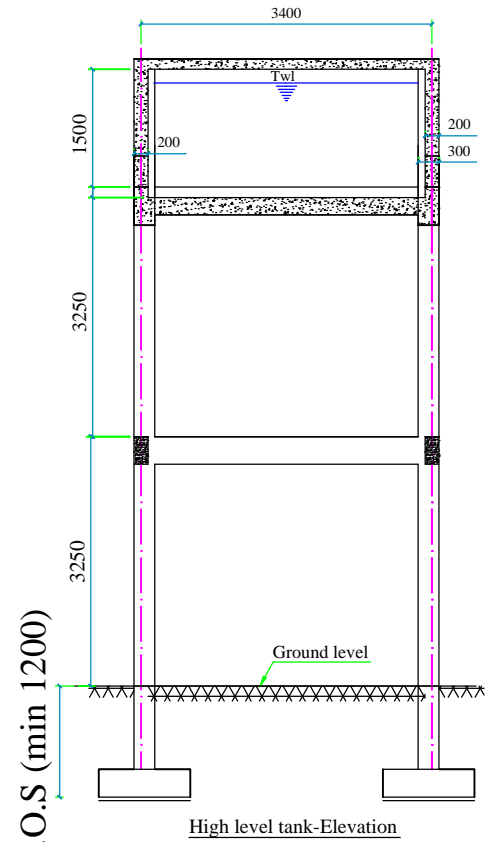
High level tanks cover slab (RC details)
Slab thickness is 150mm



Storage tank Section- RC details

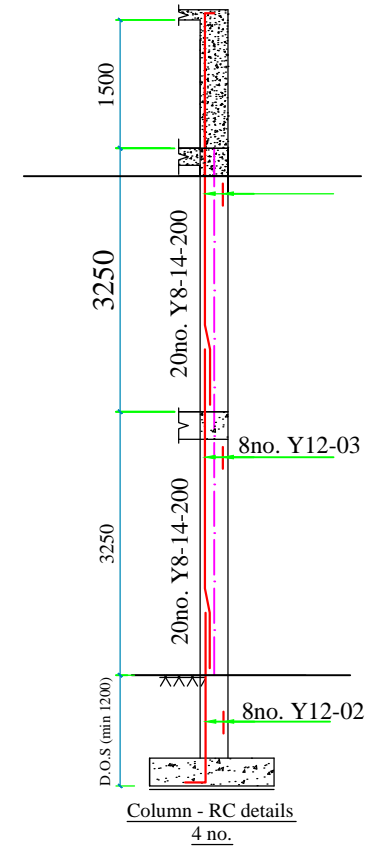


Manhole cover slab
depth is 50mm thick

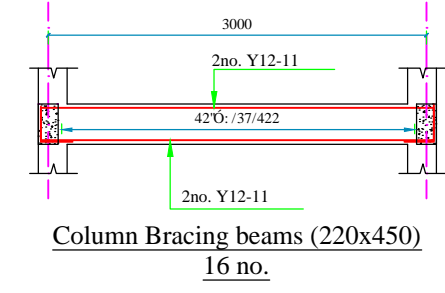


D.O.S (min 1200)

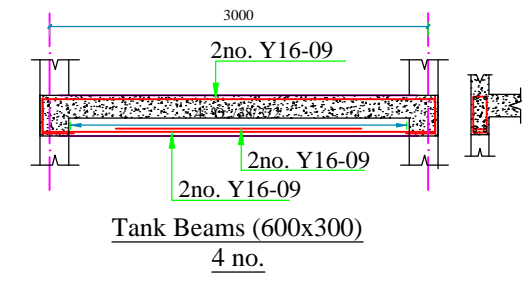
High level tank-Elevation



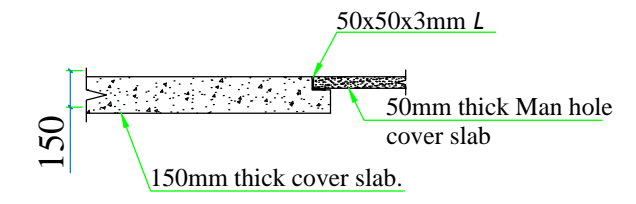
Column - RC details
4 no.



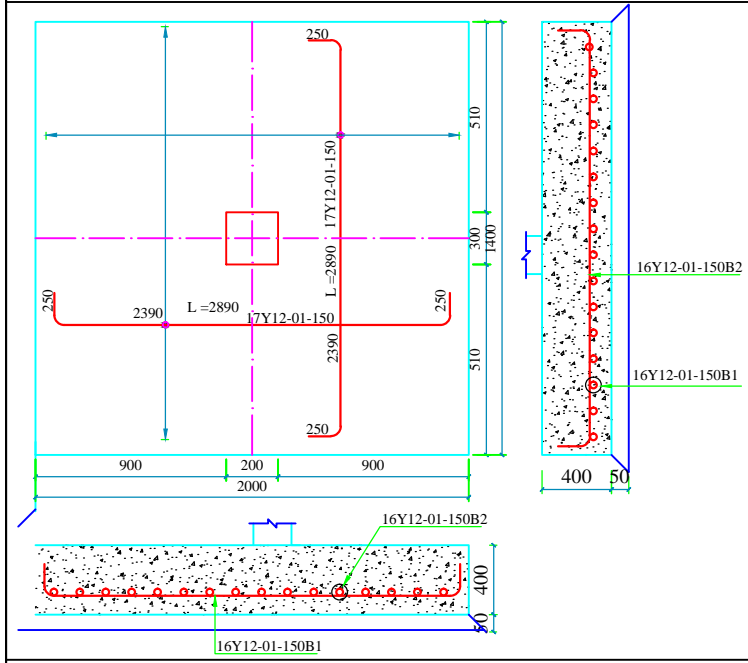
Column Bracing beams (220x450)
16 no.



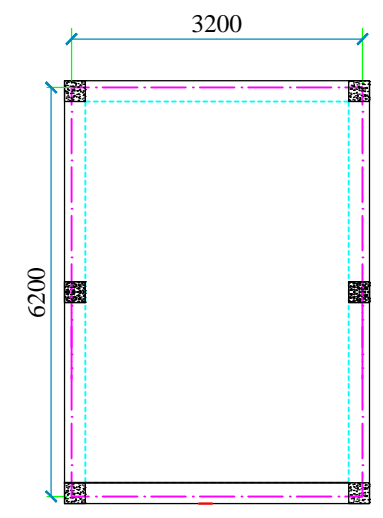
Tank Beams (600x300)
4 no.



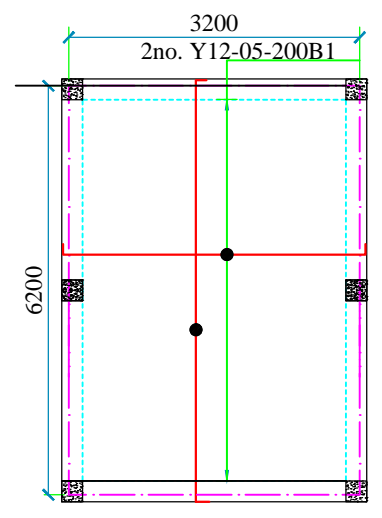
Detail at man hole



Base F1-RC details
4 no.



Column bracing
all beams are (450x220)



High level tanks Base slab (RC details)
Slab thickness is 200mm

High Level Water Tank of
30M3 Capacity (8M Height)

TITLE

000

- Notes
- All dimensions are in millimetres
 - The reinforcement bars are square twisted high tensile steel bar s
 - B1** - Bottom one (First bottom layer)
 - B2** - Bottom two (Second bottom layer)
 - T1** - Top one (First top layer)
 - T2** - Top two (Second top layer)
 - Y** - Diameter of steel Bar